

2024 Data Linkage Symposium

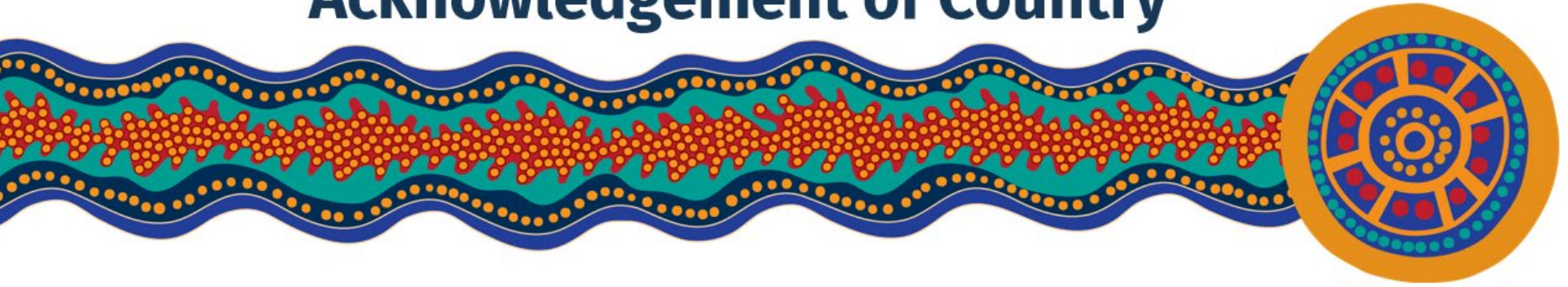
Linking primary and acute care data to inform
and transform health service delivery

Queensland's design phase for the National Primary and Acute Care Data Linkage Project

Dr Trisha Johnston

Director, Statistical Analysis and Linkage Unit, Queensland Health

Acknowledgement of Country

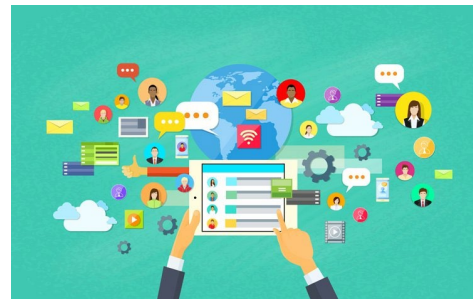


Queensland Health respectfully acknowledges Aboriginal and Torres Strait Islander peoples as the Traditional and Cultural Custodians of the lands on which we live and work to deliver healthcare to all Queenslanders. We pay our respects to Elders past and present, and to future community leaders.

National project context



- In 2022 the First Secretaries Group prepared a report for National Cabinet recommending priority interfaces to focus on to **improve care pathways** for patients and to address pressures on the health and hospital system.
- These were the interfaces with **primary care, disability care and aged care**.



- The Health Ministers Meeting (HMM) and Health Chief Exec Forum (HCEF) approved funding for a national project to **design** a system to allow data across the primary and acute care interface to be shared and linked with funding for a national project team (led by NSW and Department of Health and Aged Care (DoHAC)) and each State/Territory.

National project context

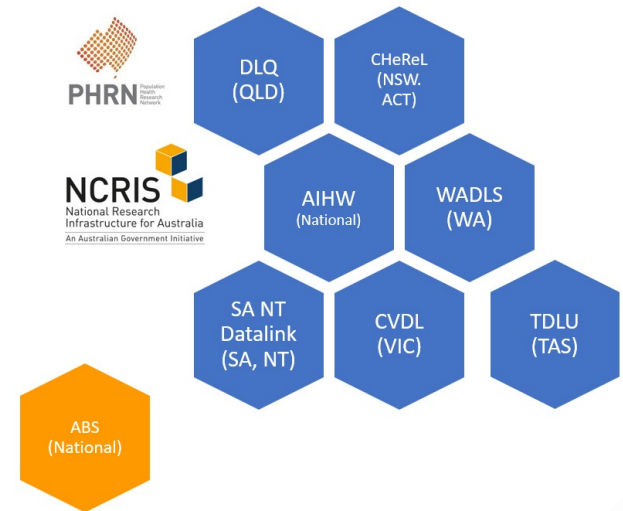


- Project oversight is managed through the Health Data Collaboration which includes representatives from **DoHAC, AIHW, ABS** and **State/Territory Health Departments**.
- This Collaboration reports up to HCEF/HMM and is committed to a collaborative approach to enabling a **National Health Data System** for Australia that makes use of existing infrastructure and processes to provide evidence for decision making related to health services.
- The Health Data System is a key element in the forthcoming **National Health Reform Agreement** addendum.

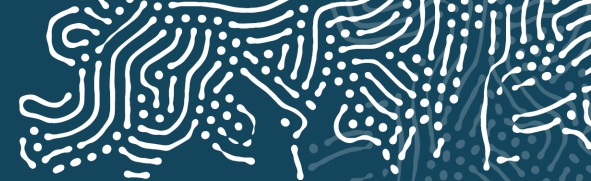


National Project context – linkage building blocks

- We have an established network of health data linkage infrastructure (linkage nodes) that was enabled through the Population Health Research Network (PHRN) using National Collaborative Research Infrastructure Strategy (NCRIS) funding.
- Linkage Nodes have become accredited under the Data Availability and Transparency Act Scheme as Data Service Providers to ensure a high and consistent standard of data management privacy and security capability.
- The PHRN has funded an ongoing body of work to enable data linkage units to develop processes to share linkage maps across national and state/territory-based Master Linkage Files (enduring linkage maps in each linkage node). This distributed **National Linkage System** is a key building block for the **National Health Data System**. This will be a key element of the National Primary and Acute Care Data Linkage project but also of other health data initiatives such as the National Disability Data Asset and the Australian Centre for Disease Control data requirements.



National Primary and Acute Care Data Linkage Project

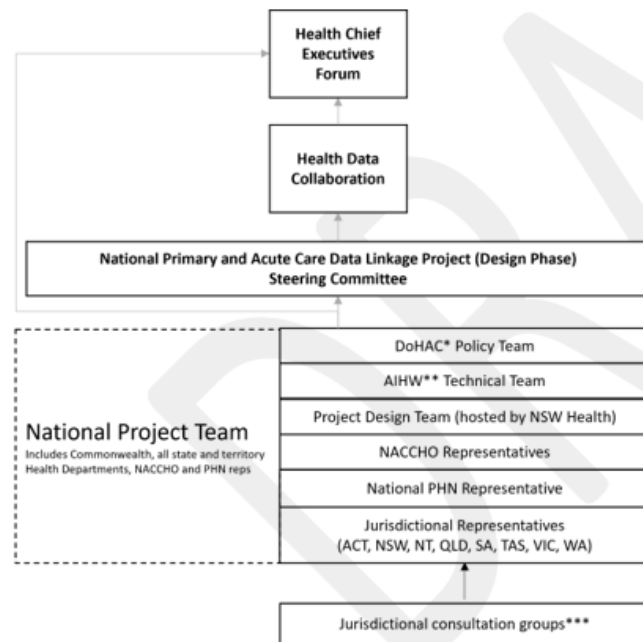


The National Primary and Acute Care Data linkage project aims to **design a national approach that facilitates systematised sharing and linkage of primary and acute care health service data.**

Funding has been provided for a 12-month **design phase** which includes:

- a national approach that enables cross-jurisdictional and federal-state sharing of data.
- a **‘hub and spoke’** approach, where jurisdictions can engage locally to design an approach that is adaptable to their local context (**‘spokes’**), while meeting national needs (**‘hub’**).

NPACDLP Governance and Reporting

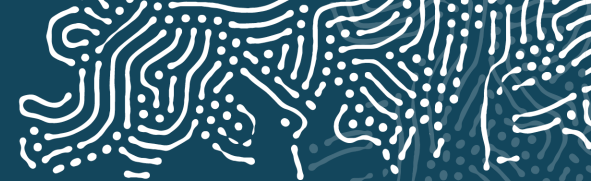


*Department of Health and Aged Care

**Australian Institute of Health and Welfare

***Consultation group composition is at jurisdictional discretion, may include local PHN, GP, Consumer, ACCHOO representatives

National Project Design Domains



The design phase for the Project will focus on five key design domains.

The five key design domains include:



Scope

(e.g. identifying the priority services, datasets, specifications, standards, potential to leverage existing assets)



Data sharing governance

(e.g. defining how data will be managed, shared and governed across jurisdictions, oversight over reporting and sovereignty)



Privacy and legal

(e.g. ensuring legal compliance and safeguarding privacy across all data sharing activities, identifying legal barriers, ethics requirement and privacy assessment)



Data management and technology

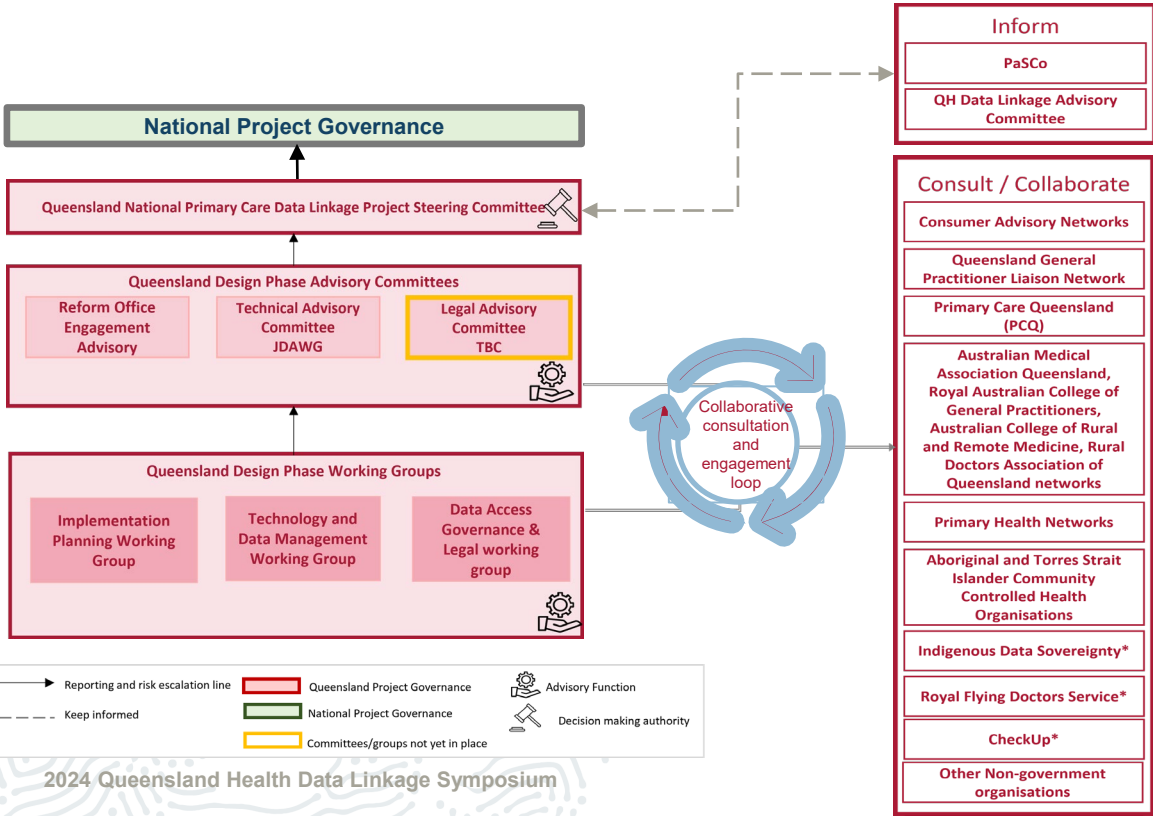
(e.g. exploring technical solutions and infrastructure for extraction, transfer and storage, Privacy Preserving Record Linkage, multi-way sharing, systems for secure data access)



Funding and implementation

(e.g. costs of building the data linkage infrastructure and management, user interface, building a business case)

Queensland's Design Phase for the National Primary and Acute Care Data Linkage Project - governance



Queensland's Design Phase for the National Primary and Acute Care Data Linkage Project - scope



This project provides an opportunity to design a system for Queensland collaboratively that will provide value for patients (consumers), health service providers (e.g. GPs, AMSs, hospitals), coordinating bodies (e.g. PHNs, ACCHOs, HHSs RACGP), and government departments responsible for health services.

We are seeking to identify and build on existing models and processes where possible – both technical and governance.

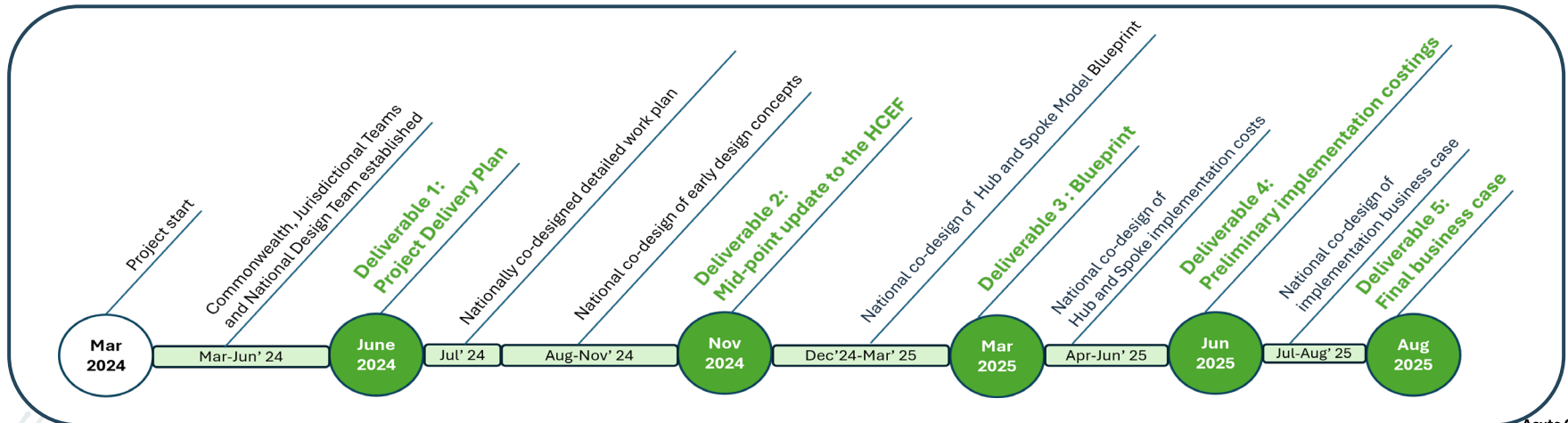
Scope:

In-Scope	Out of Scope
Design - engagement and collaborative design across project domains (scope, governance, privacy, legal, technical), costing for implementation, business case to seek funding	Implementation of the design
System and service planning, improvement and population health use cases	Linkage and system interoperability for direct patient care
Privacy Preserving Record Linkage (PPRL) at the patient level	Linkage of identifiable patient data

Queensland's Design Phase for the National Primary and Acute Care Data Linkage Project - deliverables



- The timeline below outlines the key deliverables for the national project, from initiation through to the final business case submission in August 2025.
- Queensland will feed into the national project with Queensland-specific components.



Queensland's Design Phase for the National Primary and Acute Care Data Linkage Project - next steps



- **Ongoing stakeholder engagement**
 - to identify existing data and processes
 - to understand concerns and risks to be managed in the design
 - to focus the design on what will provide value for stakeholders
- **Development of a high-level design blueprint**
- **Development of a costed Business Case to seek funding for implementation**



For more information, or to engage further with Queensland's design phase for the National Primary and Acute Care Data Linkage Project, please contact Halima Akanbi via qld_pcp@health.qld.gov.au



Website: <https://www.health.qld.gov.au/hsu/qld-primary-care-project>

